

Model:
AC1SPSOLAR

TRAILER AND MOBILE ASSET TRACKING

Trailers, containers, and mobile assets of any kind are valuable investments. Track powered or unpowered units with our state-of-the-art, self-powered, solar-charging, GPS tracking device from AutoConnect.

Easily identify the location and status of your assets at all times with this rugged GPS tracking device that can be deployed in extreme environments. Enjoy magnet or permanent mount flexibility and up to 10 years battery life with 100 position reports per day.



REAL-TIME GPS

Locate your vehicle from anywhere



WEATHER PROOF

Dust and water resistant protective case



ALERTS

Receive alerts via text or email for any activity



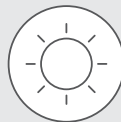
SELF-POWERED

No external power source required



HISTORY

Review driving history and see times and routes taken



SOLAR-CHARGING

Solar panel to charge internal batteries

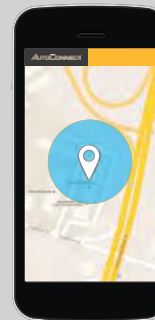
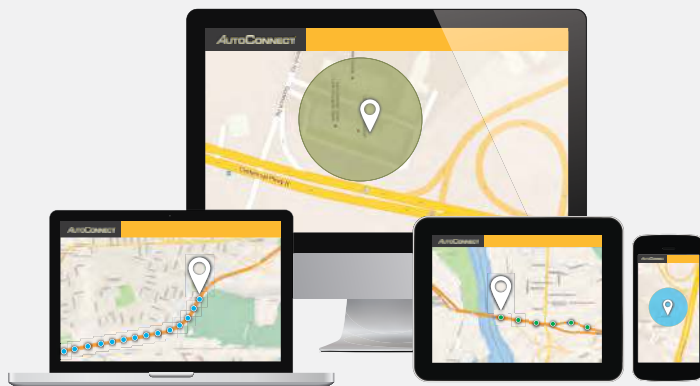


SOLAR SERVICE PLANS



AIRTIME PLANS	GPS	GPS+	Auto Track 5
UNITS COMPATIBLE WITH AIRTIME PLANS			
Movement Updating	●	20 Min*	5 Min*
AutoConnect Website Dashboard Access	●	●	●
On Demand Locates	●	●	●
24 Hour "Heartbeat" Position	●	●	●
Vehicle Tow Alerts w/ ignition monitoring	●	●	●
Location Entrance / Exit Alerts	●	●	●
Geofence Breach Alert	●	●	●
After Hours Usage Report	●	●	●
Battery Low Alert	●	●	●
Back-up Battery w/Disconnect Alerts	●	●	●
Low Voltage Deep Sleep	●	●	●
Wake-up Due to Motion	●	●	●

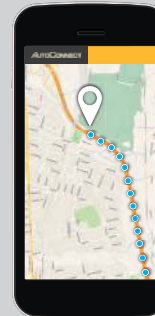
* Reporting frequency when the vehicle's ignition is on and moving.



REAL-TIME GPS TRACKING

View the real-time location and movement history of your mobile asset fleet from your Smartphone or any connected device.

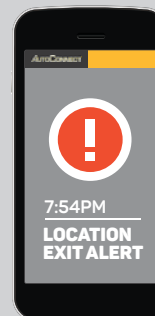
On demand location tracking
Landmark entrance/exit monitoring
Excessive idling and speed monitoring
After hours usage detection



ADVANCED AUTOTRACK REPORTING

Record the position and status of your mobile asset fleet automatically as it moves on Google Maps with AutoTrack service plans.

Live tracking
Reports each stop position
Arrival and departure times
Historical replay tool



LOCATION SECURITY MONITORING

Take comfort in knowing that your mobile assets are being monitored 24/7. Set triggered alerts that you have authorized by text message or email notification.

Tow alert
Geofence breach alert
Location exit/entrance alert
Motion alert